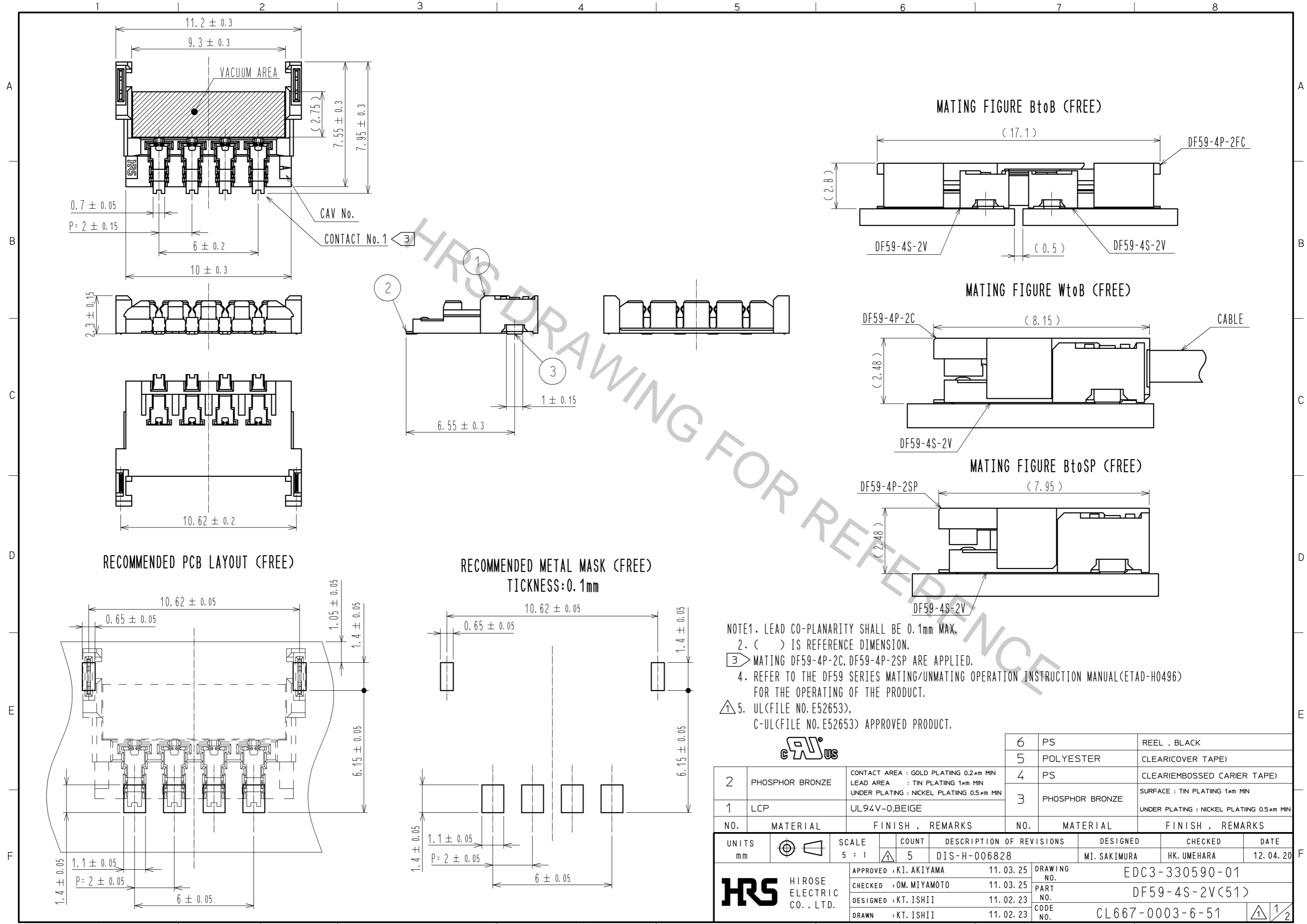


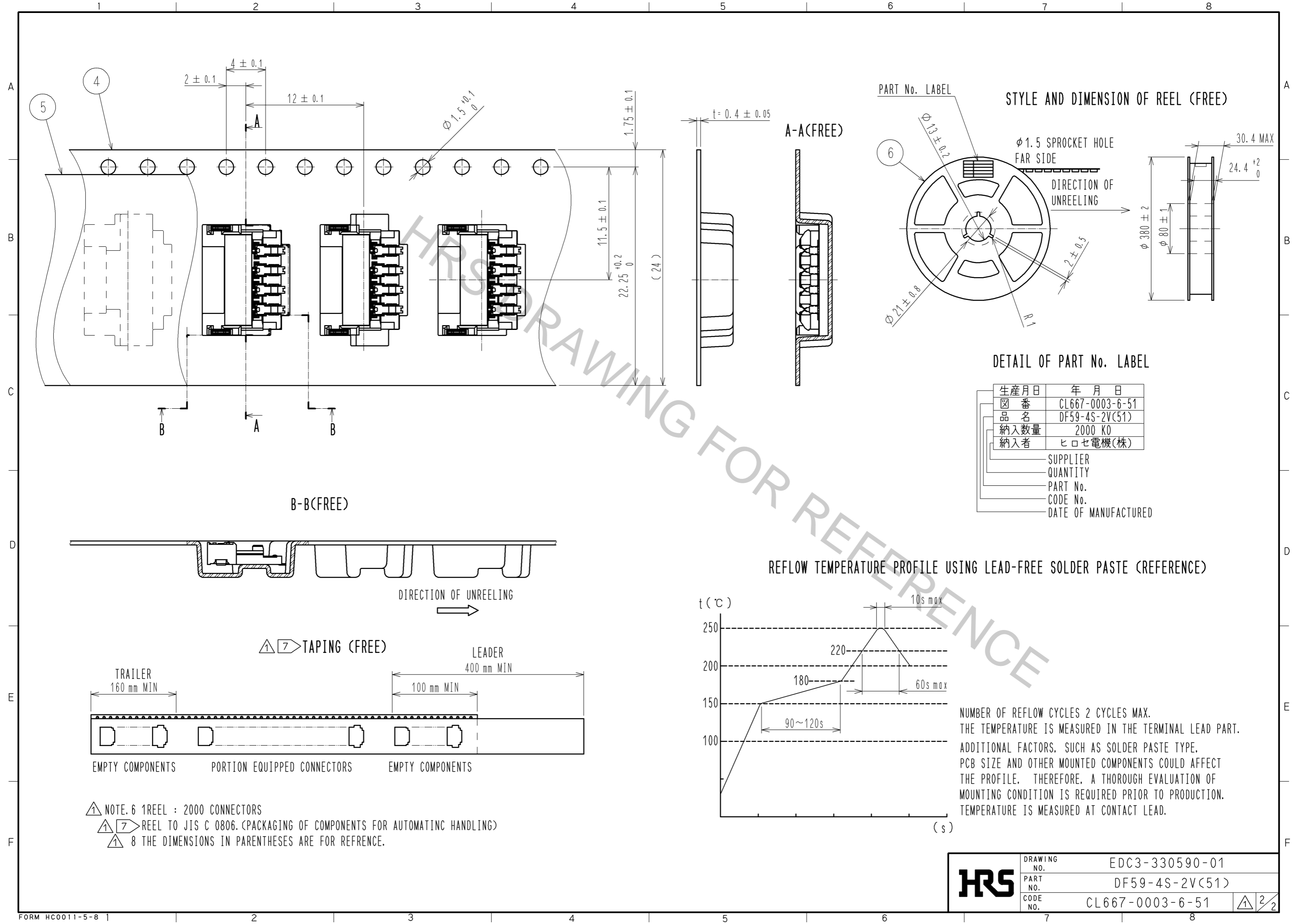
Sep.1.2017 Copyright 2017 HIROSE ELECTRIC CO., LTD. All Rights Reserved.



- NOTE1. LEAD CO-PLANARITY SHALL BE 0.1mm MAX.
 2. () IS REFERENCE DIMENSION.
 ③ MATING DF59-4P-2C, DF59-4P-2SP ARE APPLIED.
 4. REFER TO THE DF59 SERIES MATING/UNMATING OPERATION INSTRUCTION MANUAL(ETAD-H0496) FOR THE OPERATING OF THE PRODUCT.
 ⚠ 5. UL(FILE NO. E52653), C-UL(FILE NO. E52653) APPROVED PRODUCT.

2		PHOSPHOR BRONZE	CONTACT AREA : GOLD PLATING 0.2μm MIN LEAD AREA : TIN PLATING 1μm MIN UNDER PLATING : NICKEL PLATING 0.5μm MIN	6	PS	REEL , BLACK
1		LCP	UL94V-0,BEIGE	5	POLYESTER	CLEAR(COVER TAPE)
NO.		MATERIAL	FINISH , REMARKS	4	PS	CLEAR(EMBOSSED CARRIER TAPE)
				3	PHOSPHOR BRONZE	SURFACE : TIN PLATING 1μm MIN UNDER PLATING : NICKEL PLATING 0.5μm MIN
UNITS		mm	SCALE	5 : 1	COUNT	
DESCRIPTION OF REVISIONS		DIS-H-006828		DESIGNED		MI. SAKIMURA
CHECKED		OM. MIYAMOTO		CHECKED		HK. UMEHARA
DESIGNED		KT. ISHII		DATE		12. 04. 20
DRAWN		KT. ISHII		DRAWING NO.		EDC3-330590-01
APPROVED		KI. AKIYAMA		PART NO.		DF59-4S-2V(51)
HRS HIROSE ELECTRIC CO., LTD.				CODE NO.		CL667-0003-6-51

Sep.1.2017 Copyright 2017 HIROSE ELECTRIC CO., LTD. All Rights Reserved.



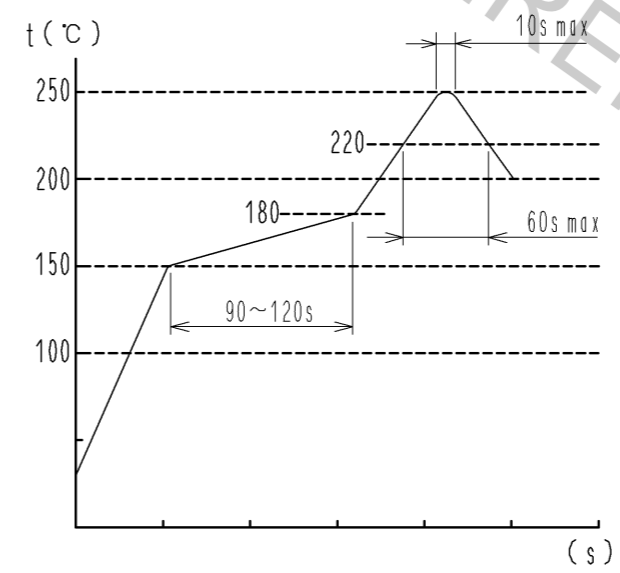
STYLE AND DIMENSION OF REEL (FREE)

DETAIL OF PART No. LABEL

生産月日	年月日
図番	CL667-0003-6-51
品名	DF59-4S-2V(51)
納入数量	2000 KO
納入者	ヒロセ電機(株)

SUPPLIER
QUANTITY
PART No.
CODE No.
DATE OF MANUFACTURED

REFLOW TEMPERATURE PROFILE USING LEAD-FREE SOLDER PASTE (REFERENCE)



NUMBER OF REFLOW CYCLES 2 CYCLES MAX.
THE TEMPERATURE IS MEASURED IN THE TERMINAL LEAD PART.
ADDITIONAL FACTORS, SUCH AS SOLDER PASTE TYPE,
PCB SIZE AND OTHER MOUNTED COMPONENTS COULD AFFECT
THE PROFILE. THEREFORE, A THOROUGH EVALUATION OF
MOUNTING CONDITION IS REQUIRED PRIOR TO PRODUCTION.
TEMPERATURE IS MEASURED AT CONTACT LEAD.

- NOTE. 6 1 REEL : 2000 CONNECTORS
- 7 REEL TO JIS C 0806. (PACKAGING OF COMPONENTS FOR AUTOMATIC HANDLING)
- 8 THE DIMENSIONS IN PARENTHESES ARE FOR REFERENCE.

HRS	DRAWING NO.	EDC3-330590-01
	PART NO.	DF59-4S-2V(51)
	CODE NO.	CL667-0003-6-51
		2/2